

MSA CONTROL - (11) 3961-1171 - comercial@msacontrol.com.br



Spectra RMS™

Disjuntor Eletrônico

Caixa Moldada

Alta Capacidade de Ruptura



GE imagination at work



SG

SK

SE





SF

A linha Spectra RMST[™] é composta por disjuntores de caixa moldada eletrônicos, destinados à proteção de todo o sistema responsável pela alimentação de máquinas e motores. Os componentes eletrônicos garantem uma alta precisão na operação do disjuntor, evitando performances indesejáveis (sobrepoteção e subpoteção) decorrentes de distorções na forma de onda (harmônicos).

Estes disjuntores têm uma corrente nominal que varia de 15 a 1200 A, com uma capacidade de ruptura de até 200 kA em 240 Vca, tendo ainda a característica de serem limitadores de corrente. O seu plug de corrente permite o ajuste da corrente nominal até o valor da corrente do sensor de cada estrutura, flexibilidade que pode ser demonstrada quando, por exemplo, um disjuntor de 400 A pode ter sua corrente ajustada de 125 a 400 A, sendo necessário apenas a troca do plug de corrente. Outra característica presente na linha Spectra é o ajuste de tempo curto/instantâneo, permitindo melhor seletividade.

A linha Spectra RMST[™] atende às normas americanas (NEMA/UL) e internacionais (IEC 947-2).

Tabela Técnica

	Spectra E		Spectra F		Spectra G		Spectra K									
																
Nº de Pólos	SEH	SEL	SEH	SEL	SFH	SFL	SFP	SGH	SGL	SGP	SKH	SKL	SKP			
Corrente Máxima (A)	2,3		2,3		2,3		2,3		2,3		2,3		2,3			
Tensão Máxima (Vca)	150		150		250		250		400 e 600		800 e 1200		800 e 1200			
Intervalo de Corrente (A)	600 / 690		600 / 690		600 / 690		600 / 690		600 / 690		600 / 690		600 / 690			
	15 - 30		40 - 150		70 - 250		70 - 250		125 - 600		300 - 1200		300 - 1200			
Valor de Interrupção (kA)	NEMA AB - 1 (50/60 Hz)															
	-	240Vca		65	100	65	100	65	100	200	65	100	200	65	100	200
		480Vca		25	65	25	65	35	65	100	35	65	100	50	65	100
		600Vca		18	25	18	25	22	25	25	25	65	65	25	42	65
	IEC 947 - 2 (50/60 Hz)															
	Limite (Icu)	220-240Vca		65	100	65	100	65	100	200	65	100	200	65	100	140
		380-415Vca		15	20	35	65	35	65	100	25	65	100	50	65	85 ⁴
		500Vca		6	8	25	40	25	40	65	18	35	50	25	42	50
		690Vca		-	3	-	5	-	14	18	-	14	18	-	14	18
		Serviço (Ics)	220-240Vca		33	50	33	50	33	50	100	33	50	100	16	25
380-415Vca			10	15	17	33	17	33	50	13	33	50	13	16 ²	25	
500Vca			6	8	12	20	12	20	33	9	18	25	13	21 ³	25	
690Vca		-	3	-	5	-	7	9	-	7	9	-	14	18		
Estrutura	Dimensões		Altura		160		257		256		394					
			Largura		105		105		140		210					
			Profundidade		86		97		97		140					
			Peso (3 pólos - maior configuração de frame) (kg)		2.56		4.15		7.19		21.59					

² 21 kA para os modelos de K1200

³ 16 kA para os modelos de K1200

⁴ 70 kA para os modelos de K1200

MSA CONTROL - (11) 3961-1171 - comercial@msacontrol.com.br

Spectra SE - 15 a 150A

Icu 380/415V CA em kA eff.



Disjuntores Bipolares

In (A)	15kA	20kA	35kA	65kA
15	SEHA124AT0015B	SELA124AT0015B	-	-
20	SEHA124AT0020B	SELA124AT0020B	-	-
25	SEHA124AT0025B	SELA124AT0025B	-	-
30	SEHA124AT0030B	SELA124AT0030B	-	-
40	-	-	SEHA124AT0040B	SELA124AT0040B
50	-	-	SEHA124AT0050B	SELA124AT0050B
60	-	-	SEHA124AT0060B	SELA124AT0060B
70	-	-	SEHA124AT0070B	SELA124AT0070B
80	-	-	SEHA124AT0080B	SELA124AT0080B
90	-	-	SEHA124AT0090B	SELA124AT0090B
100	-	-	SEHA124AT0100B	SELA124AT0100B
110	-	-	SEHA124AT0110B	SELA124AT0110B
125	-	-	SEHA124AT0125B	SELA124AT0125B
150	-	-	SEHA124AT0150B	SELA124AT0150B

Disjuntores Tripolares

In (A)	15kA	20kA	35kA	65kA
15	SEHA136AT0015B	SELA136AT0015B	-	-
20	SEHA136AT0020B	SELA136AT0020B	-	-
25	SEHA136AT0025B	SELA136AT0025B	-	-
30	SEHA136AT0030B	SELA136AT0030B	-	-
40	-	-	SEHA136AT0040B	SELA136AT0040B
50	-	-	SEHA136AT0050B	SELA136AT0050B
60	-	-	SEHA136AT0060B	SELA136AT0060B
70	-	-	SEHA136AT0070B	SELA136AT0070B
80	-	-	SEHA136AT0080B	SELA136AT0080B
90	-	-	SEHA136AT0090B	SELA136AT0090B
100	-	-	SEHA136AT0100B	SELA136AT0100B
110	-	-	SEHA136AT0110B	SELA136AT0110B
125	-	-	SEHA136AT0125B	SELA136AT0125B
150	-	-	SEHA136AT0150B	SELA136AT0150B

Spectra SF - 70 a 250A

Icu 380/415V CA em kA eff.



Disjuntores Bipolares

In (A)	35kA	65kA	100kA
70	SFHA224AT0070B	SFLA224AT0070B	SFPA224AT0070B
90	SFHA224AT0090B	SFLA224AT0090B	SFPA224AT0090B
100	SFHA224AT0100B	SFLA224AT0100B	SFPA224AT0100B
110	SFHA224AT0110B	SFLA224AT0110B	SFPA224AT0110B
125	SFHA224AT0125B	SFLA224AT0125B	SFPA224AT0125B
150	SFHA224AT0150B	SFLA224AT0150B	SFPA224AT0150B
175	SFHA224AT0175B	SFLA224AT0175B	SFPA224AT0175B
200	SFHA224AT0200B	SFLA224AT0200B	SFPA224AT0200B
225	SFHA224AT0225B	SFLA224AT0225B	SFPA224AT0225B
250	SFHA224AT0250B	SFLA224AT0250B	SFPA224AT0250B

Disjuntores Tripolares

In (A)	35kA	65kA	100kA
70	SFHA236AT0070B	SFLA236AT0070B	SFPA236AT0070B
90	SFHA236AT0090B	SFLA236AT0090B	SFPA236AT0090B
100	SFHA236AT0100B	SFLA236AT0100B	SFPA236AT0100B
110	SFHA236AT0110B	SFLA236AT0110B	SFPA236AT0110B
125	SFHA236AT0125B	SFLA236AT0125B	SFPA236AT0125B
150	SFHA236AT0150B	SFLA236AT0150B	SFPA236AT0150B
175	SFHA236AT0175B	SFLA236AT0175B	SFPA236AT0175B
200	SFHA236AT0200B	SFLA236AT0200B	SFPA236AT0200B
225	SFHA236AT0225B	SFLA236AT0225B	SFPA236AT0225B
250	SFHA236AT0250B	SFLA236AT0250B	SFPA236AT0250B



MSA CONTROL - (11) 3961-1171 - comercial@msacontrol.com.br

Spectra SG - 125 a 600A

Icu 380/415V CA em kA eff.

Disjuntores Bipolares

Frame In (A)	25kA	65kA	100kA	
400	125	SGHA426AT0125B	SGLA426AT0125B	SGPA426AT0125B
	150	SGHA426AT0150B	SGLA426AT0150B	SGPA426AT0150B
	175	SGHA426AT0175B	SGLA426AT0175B	SGPA426AT0175B
	200	SGHA426AT0200B	SGLA426AT0200B	SGPA426AT0200B
	225	SGHA426AT0225B	SGLA426AT0225B	SGPA426AT0225B
	250	SGHA426AT0250B	SGLA426AT0250B	SGPA426AT0250B
	300	SGHA426AT0300B	SGLA426AT0300B	SGPA426AT0300B
	350	SGHA426AT0350B	SGLA426AT0350B	SGPA426AT0350B
600	400	SGHA426AT0400B	SGLA426AT0400B	SGPA426AT0400B
	250	SGHA626AT0250B	SGLA626AT0250B	SGPA626AT0250B
	300	SGHA626AT0300B	SGLA626AT0300B	SGPA626AT0300B
	350	SGHA626AT0350B	SGLA626AT0350B	SGPA626AT0350B
	400	SGHA626AT0400B	SGLA626AT0400B	SGPA626AT0400B
	450	SGHA626AT0450B	SGLA626AT0450B	SGPA626AT0450B
	500	SGHA626AT0500B	SGLA626AT0500B	SGPA626AT0500B
	600	SGHA626AT0600B	SGLA626AT0600B	SGPA626AT0600B



Disjuntores Tripolares

Frame In (A)	25kA	65kA	100kA	
400	125	SGHA436AT0125B	SGLA436AT0125B	SGPA436AT0125B
	150	SGHA436AT0150B	SGLA436AT0150B	SGPA436AT0150B
	175	SGHA436AT0175B	SGLA436AT0175B	SGPA436AT0175B
	200	SGHA436AT0200B	SGLA436AT0200B	SGPA436AT0200B
	225	SGHA436AT0225B	SGLA436AT0225B	SGPA436AT0225B
	250	SGHA436AT0250B	SGLA436AT0250B	SGPA436AT0250B
	300	SGHA436AT0300B	SGLA436AT0300B	SGPA436AT0300B
	350	SGHA436AT0350B	SGLA436AT0350B	SGPA436AT0350B
600	400	SGHA436AT0400B	SGLA436AT0400B	SGPA436AT0400B
	250	SGHA636AT0250B	SGLA636AT0250B	SGPA636AT0250B
	300	SGHA636AT0300B	SGLA636AT0300B	SGPA636AT0300B
	350	SGHA636AT0350B	SGLA636AT0350B	SGPA636AT0350B
	400	SGHA636AT0400B	SGLA636AT0400B	SGPA636AT0400B
	450	SGHA636AT0450B	SGLA636AT0450B	SGPA636AT0450B
	500	SGHA636AT0500B	SGLA636AT0500B	SGPA636AT0500B
	600	SGHA636AT0600B	SGLA636AT0600B	SGPA636AT0600B

Spectra SK - 300 a 1200A

Icu 380/415V CA em kA eff.

Disjuntores Bipolares

Frame In (A)	50kA	65kA	85kA	
800	300	SKHA826AT0300B	SKLA826AT0300B	SKPA826AT0300B
	400	SKHA826AT0400B	SKLA826AT0400B	SKPA826AT0400B
	500	SKHA826AT0500B	SKLA826AT0500B	SKPA826AT0500B
	600	SKHA826AT0600B	SKLA826AT0600B	SKPA826AT0600B
	700	SKHA826AT0700B	SKLA826AT0700B	SKPA826AT0700B
	800	SKHA826AT0800B	SKLA826AT0800B	SKPA826AT0800B
1200	600	SKHA126AT0600B	SKLA126AT0600B	SKPA126AT0600B ⁽¹⁾
	700	SKHA126AT0700B	SKLA126AT0700B	SKPA126AT0700B ⁽¹⁾
	800	SKHA126AT0800B	SKLA126AT0800B	SKPA126AT0800B ⁽¹⁾
	900	SKHA126AT0900B	SKLA126AT0900B	SKPA126AT0900B ⁽¹⁾
	1000	SKHA126AT1000B	SKLA126AT1000B	SKPA126AT1000B ⁽¹⁾
	1200	SKHA126AT1200B	SKLA126AT1200B	SKPA126AT1200B ⁽¹⁾



Disjuntores Tripolares

Frame In (A)	50kA	65kA	85kA	
800	300	SKHA836AT0300B	SKLA836AT0300B	SKPA836AT0300B
	400	SKHA836AT0400B	SKLA836AT0400B	SKPA836AT0400B
	500	SKHA836AT0500B	SKLA836AT0500B	SKPA836AT0500B
	600	SKHA836AT0600B	SKLA836AT0600B	SKPA836AT0600B
	700	SKHA836AT0700B	SKLA836AT0700B	SKPA836AT0700B
	800	SKHA836AT0800B	SKLA836AT0800B	SKPA836AT0800B
1200	600	SKHA136AT0600B	SKLA136AT0600B	SKPA136AT0600B ⁽¹⁾
	700	SKHA136AT0700B	SKLA136AT0700B	SKPA136AT0700B ⁽¹⁾
	800	SKHA136AT0800B	SKLA136AT0800B	SKPA136AT0800B ⁽¹⁾
	900	SKHA136AT0900B	SKLA136AT0900B	SKPA136AT0900B ⁽¹⁾
	1000	SKHA136AT1000B	SKLA136AT1000B	SKPA136AT1000B ⁽¹⁾
	1200	SKHA136AT1200B	SKLA136AT1200B	SKPA136AT1200B ⁽¹⁾

(1) 70kA para o frame SKP

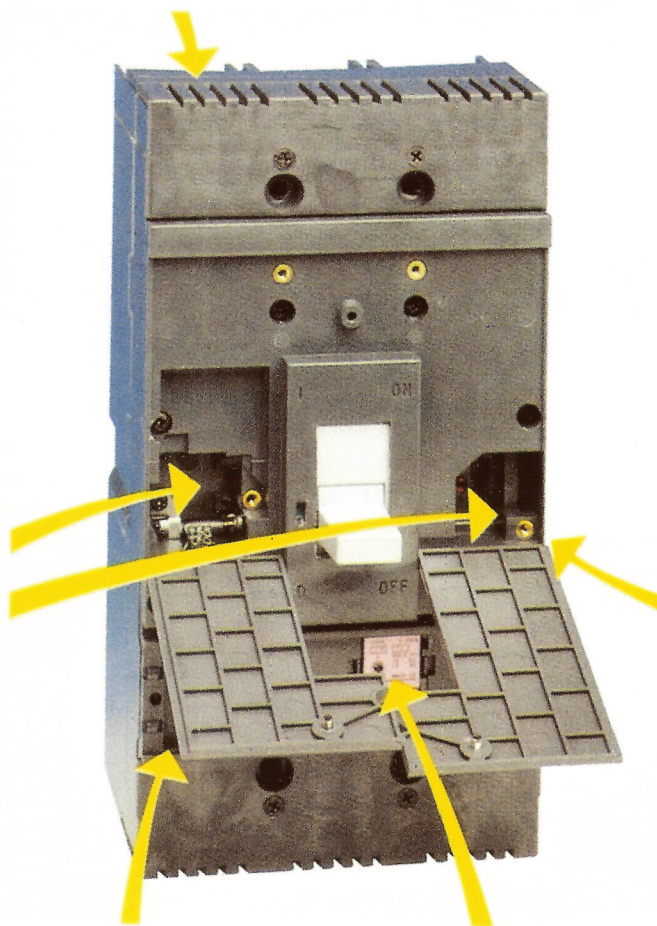
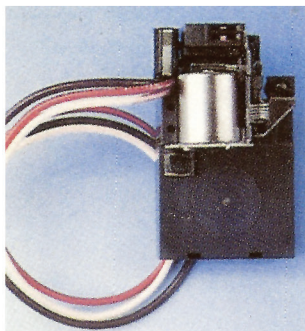




Rápida instalação dos terminais
Os conectores utilizados facilitam a instalação dos terminais linha/carga dos disjuntores SE e SF.

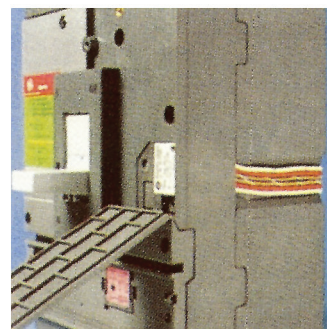
Acessórios internos

São comuns a todos os modelos: bobina de mínima tensão, contato auxiliar, bobina de disparo e contato de alarme. A facilidade de instalação é garantida pela simples inserção desses acessórios na parte frontal do disjuntor.

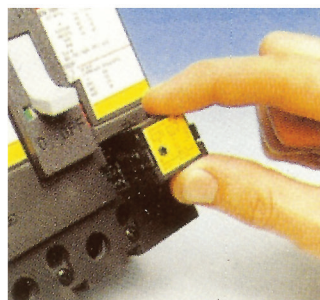


Conexão dos acessórios internos

O projeto do disjuntor permite a passagem dos fios pelas partes laterais e traseira sem implicação de aumento das dimensões do mesmo.

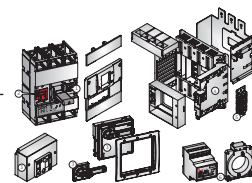


Ajuste instantâneo
O ajuste da proteção LSI (long short instantaneous) é feito pela parte frontal do disjuntor.

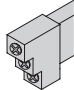


Facilidade na troca do plug de corrente
A forma construtiva impede a instalação incorreta do plug de corrente que define a corrente nominal do disjuntor.

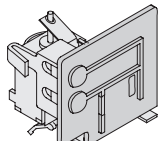
Acessórios



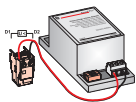
Contatos Auxiliares e de Alarme

	SE	SF	SG	SK
 Contato auxiliar 1NA/NF	SAUXPAB1	SAUXPAB1	SAUXPAB1	SAUXPAB1
Contato auxiliar 2NA/NF	SAUXPAB2	SAUXPAB2	SAUXPAB2	SAUXPAB2
Contato de Alarme 120/240 Vca	SABAP1	SABAP1	SABAP1	SABAP1

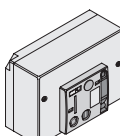
Bobinas de Disparo

 24 Vca / 24 Vcc	SAST3	SAST3	SAST3	SAST3
48 Vca / 48 Vcc	SAST4	SAST4	SAST4	SAST4
120 Vca / 125 Vcc	SAST1	SAST1	SAST1	SAST1
240 Vca / 250 Vcc	SAST2	SAST2	SAST2	SAST2

Bobinas de Mínima Tensão

 24 Vca / 24 Vcc	SAUV3	SAUV3	SAUV3	SAUV3
48 Vca / 48 Vcc	SAUV4	SAUV4	SAUV4	SAUV4
120 Vca / 125 Vcc	SAUV1	SAUV1	SAUV1	SAUV1
240 Vca / 250 Vcc	SAUV2	SAUV2	SAUV2	SAUV2

Motorização

 24 Vcc	SEMOM8	SFMOM8	SGMOM8	SKMOM8
120 Vca / 125 Vcc	SEMOM1	SFMOM1	SGMOM1	SKMOM1
240 Vca	SEMOM2	SFMOM2	SGMOM2	SKMOM2

Alavancas e Manoplas

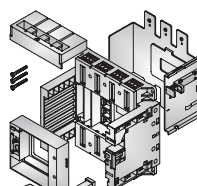
 Alavanca Rotativa TDR - Vertical	SEFR1	SEFR1	SGR1	SKR1
Alavanca Rotativa TDR - Horizontal	SEFR1H	SEFR1H	SGR1H	SKF1H
Manopla Ajustável TDM	SEFHM2	SEFHM2	SGHM2	SKHM2

*Para os acessórios SEFR1 e SEFR1H, é necessário o uso do adaptador SFRAK

Intertravamento Mecânico

 Frontal	SEFFMI	SEFFMI	SGFMI	SKFMI
---	--------	--------	-------	-------

Base Extraível Plug-in (*Requer 2 por disjuntor)

 2 Pólos - CLC	TE12PD1	TF22PD1	-	-
2 Pólos - LCL	TE12PD2	TF22PD2	-	-
3 Pólos - CLC	TE13PD1	TF23PD1	SGPC1 ⁽¹⁾	TK83PD1A ⁽²⁾ TK123PD1A ⁽³⁾
3 Pólos - LCL	TE13PD2	TF23PD2	SGPC2 ⁽¹⁾	TK83PD2A ⁽²⁾ TK123PD2A ⁽³⁾

(1) Somente para Frames G400

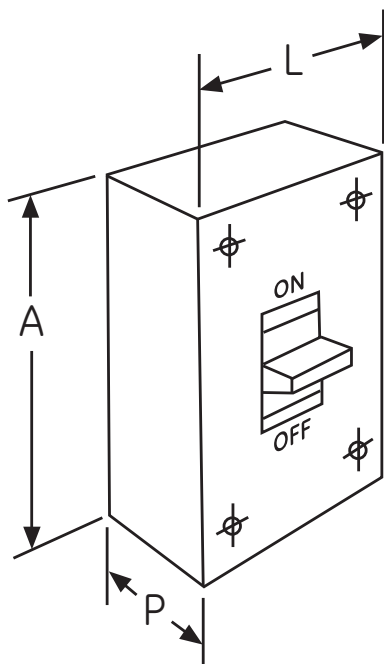
(2) Para 800A

(3) Para 1200A

Montagem Frontal:

- Lado esquerdo: Contato de alarme e bobina de mínima tensão ou bobina de disparo
- Lado direito: Contato auxiliar

Dimensões



Frame	Corrente Máxima	Dimensões em mm		
		A	L	P
SE	7, 30, 60 100 e 150	160	105	86
SF	250	257	105	97
SG	400 e 600	256	140	97
SK	800 e 1200	394	210	140

Os desenhos no formato CAD estão disponíveis no nosso website br.geindustrial.com

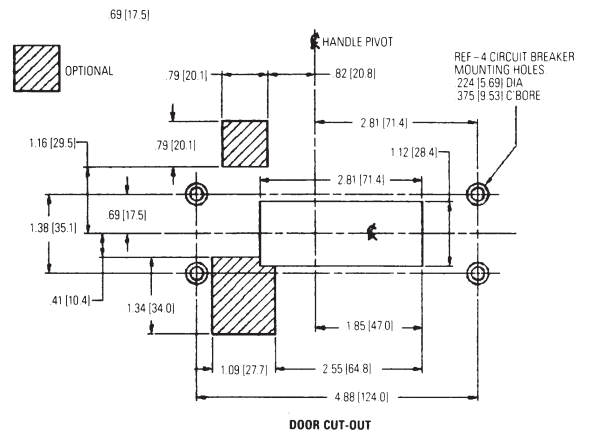
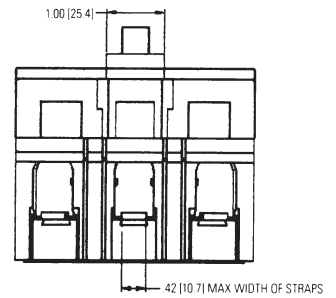
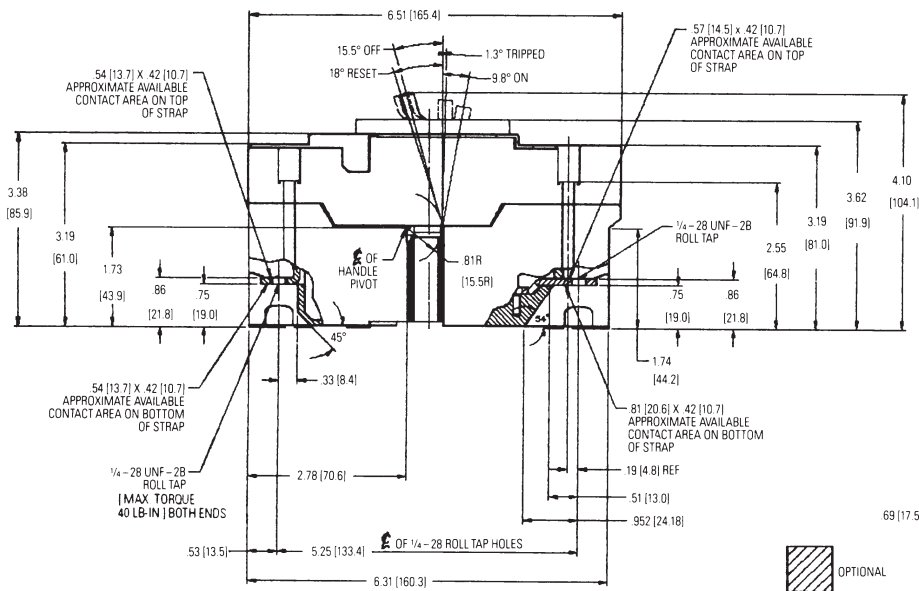
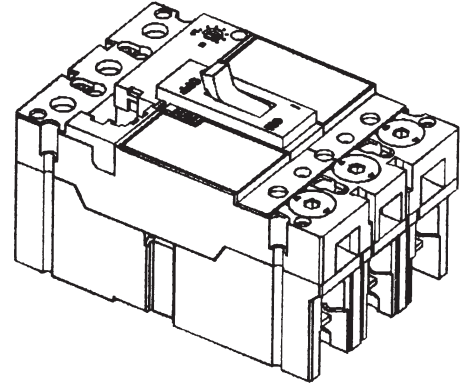
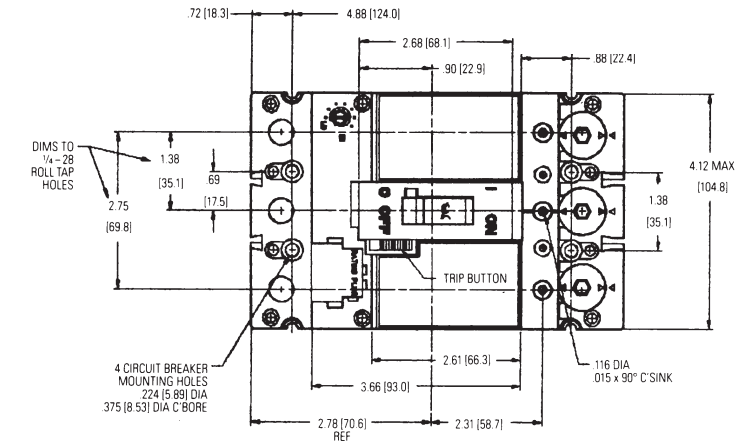
Bitolas dos cabos para os terminais

Modelo do SPECTRA	SE150	SF250	SG400/600	SK800	SK1200
Modelo do terminal (TCAL)	TCAL18	TCAL29	TCLK365	TCAL81	TCAL125
Diametro / dimensões aproximadas dos terminais (TCAL) - mm	12	18	1 x Φ 21,4 + 1 x Φ 23,4	3 x Φ 21,4	4 x Φ 21,4
Bitola mínima	4mm ² Cu	10mm ² Cu	Φ 21,4 - 25mm ² Cu Φ 23,4 - 50mm ² Cu	120mm ² Cu	120mm ² Cu
Bitola máxima	70mm ² Cu	150mm ² Cu	Φ 21,4 - 240mm ² Cu (*) Φ 23,4 - 240mm ² Cu	240mm ² Cu (*)	240mm ² Cu (*)

(*) Nota importante: as bitolas máximas indicadas acima são para cabos de cobre com classe de encordoamento 2. Para cabos com classe de encordoamento 5 ou maior (cabos flexíveis / extraflexíveis), consultar o diâmetro dos cabos nas tabelas de características técnicas dos fabricantes. Para alguns fabricantes de cabos é possível usar a bitola indicada para cabos de classe de encordoamento 5.

Dimensões

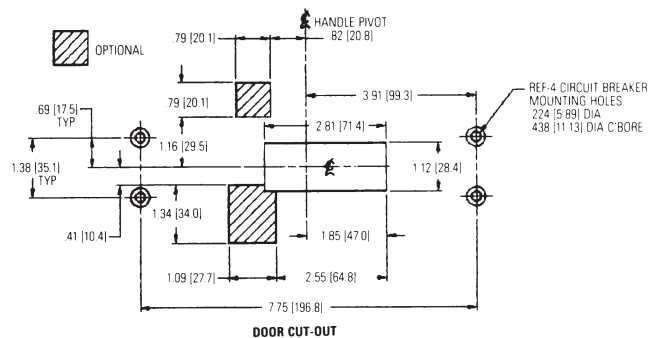
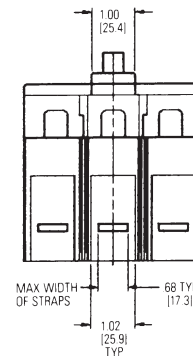
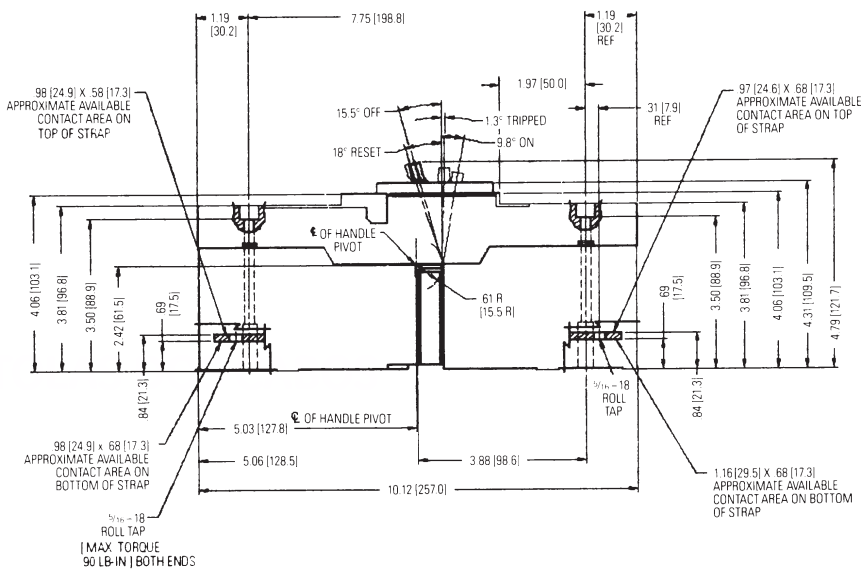
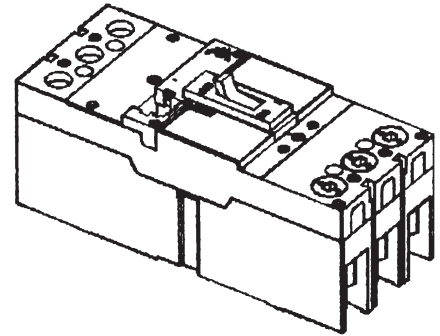
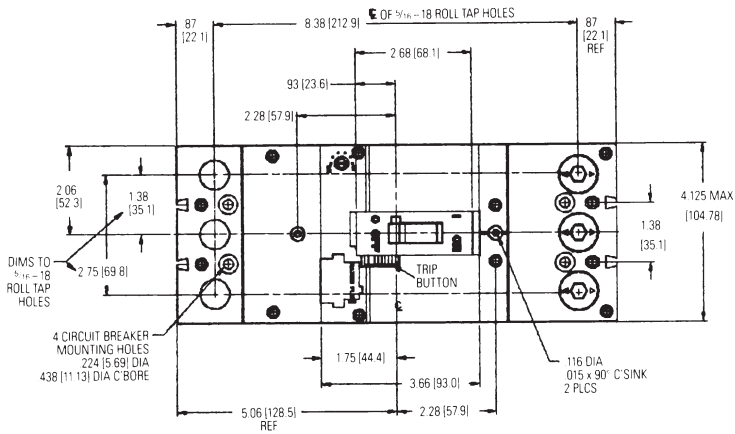
Spectra SE



Nota: As dimensões entre () estão em mm.

Dimensões

Spectra SF

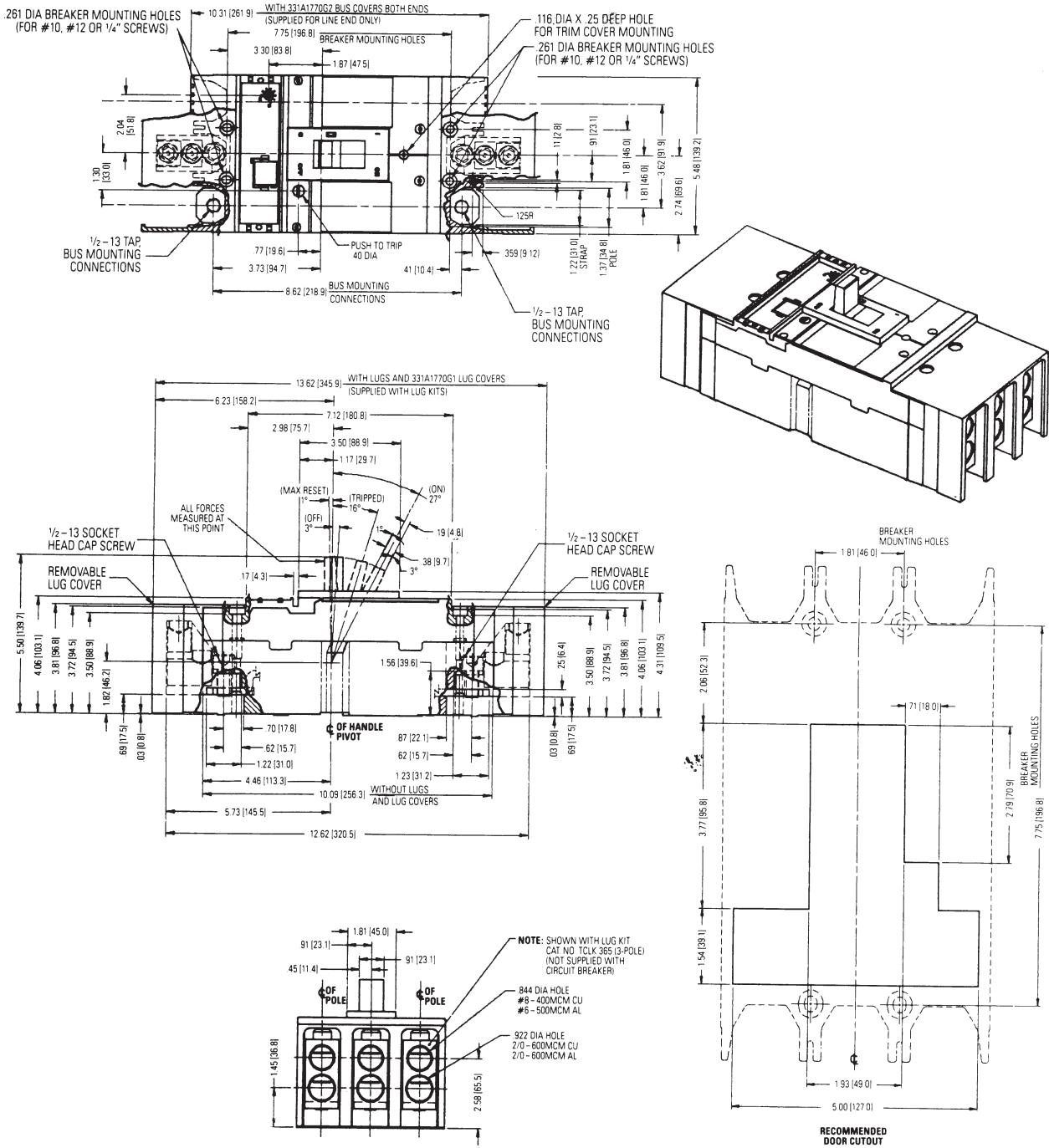


Nota: As dimensões entre () estão em mm.



Dimensões

Spectra SG

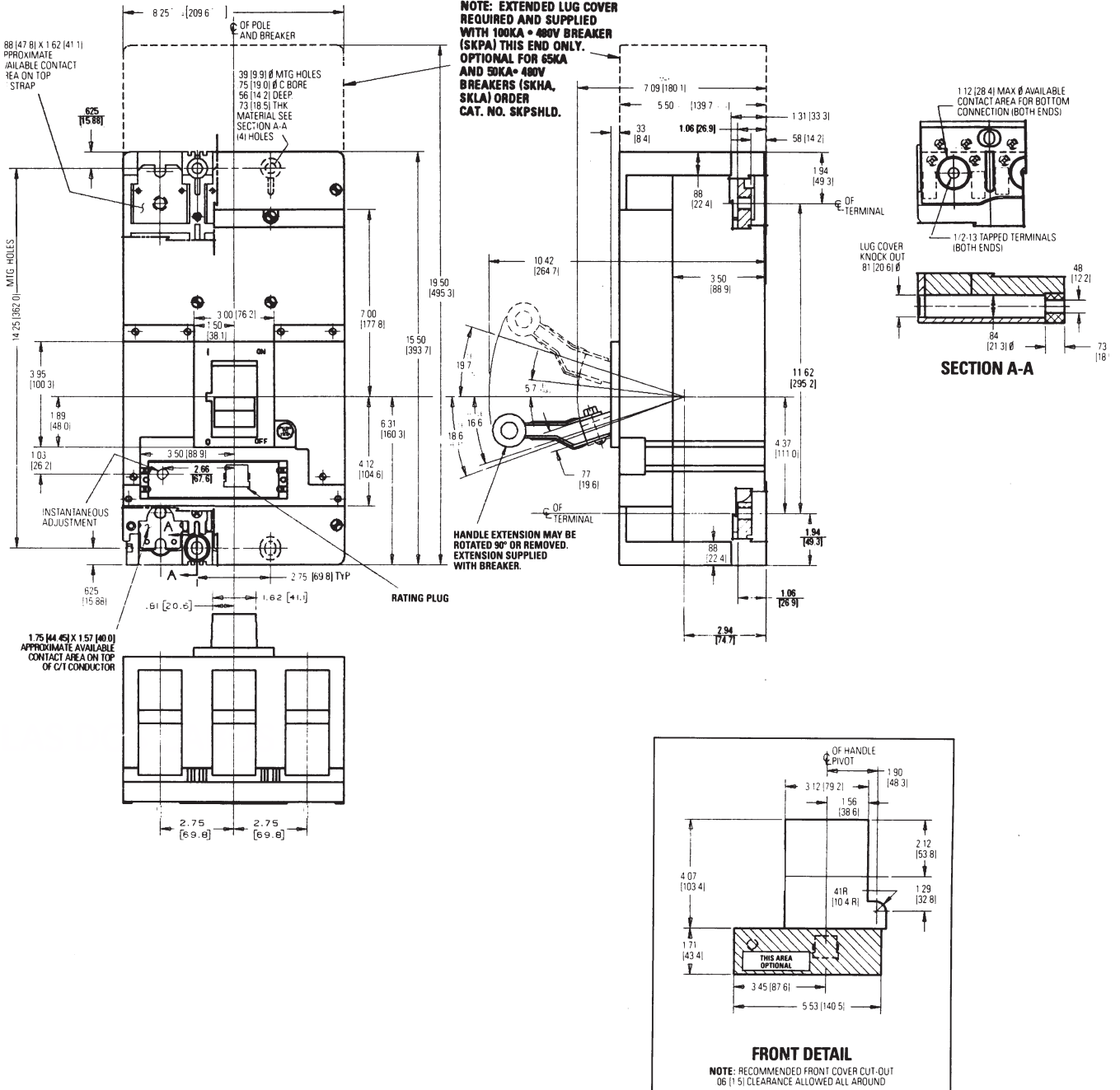


Nota: As dimensões entre () estão em mm.



Dimensões

Spectra SK

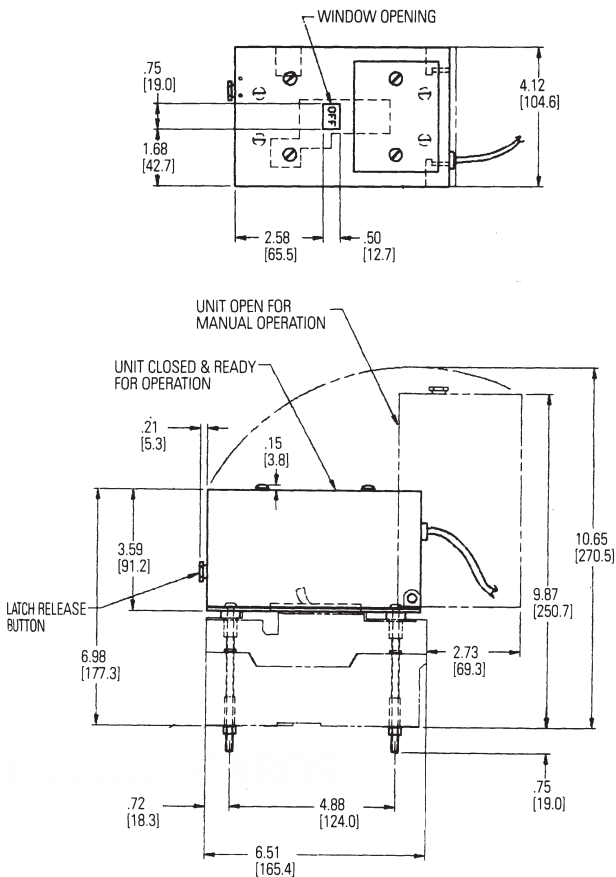


Nota: As dimensões entre () estão em mm.

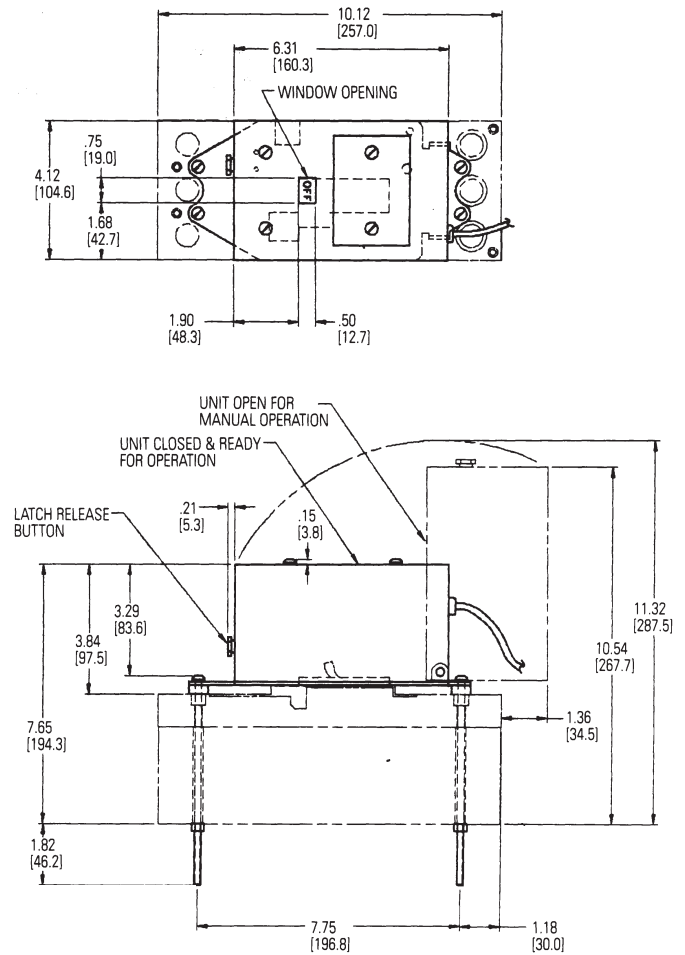


Dimensões

Motorização



Linha SE150



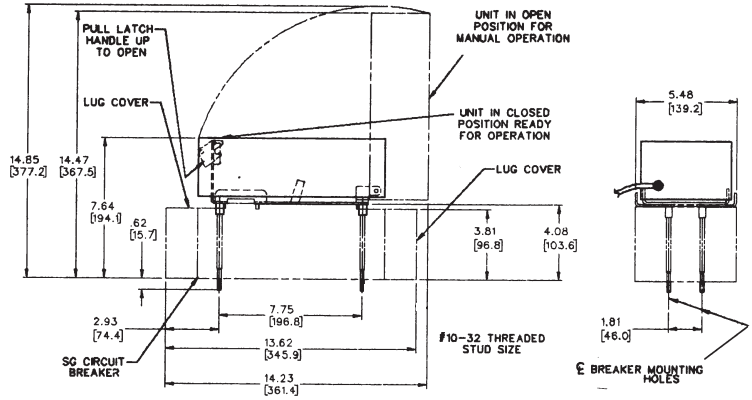
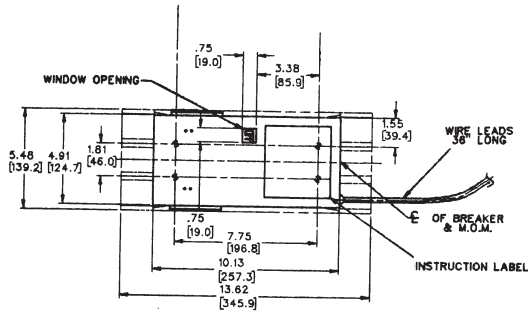
Linha SF250

Nota: As dimensões entre () estão em mm.

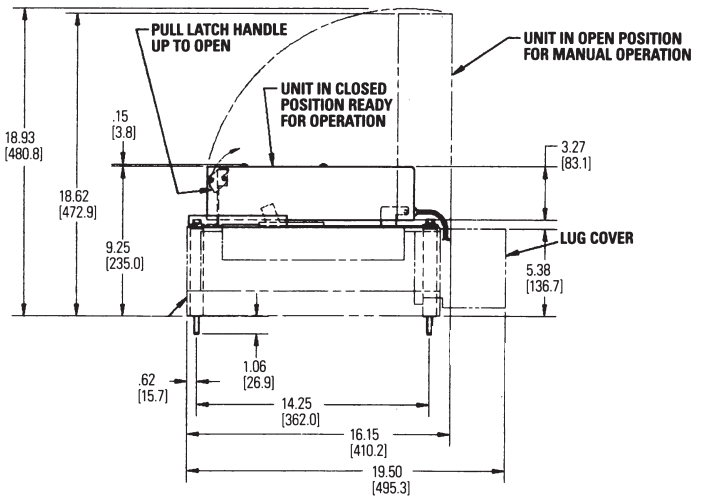
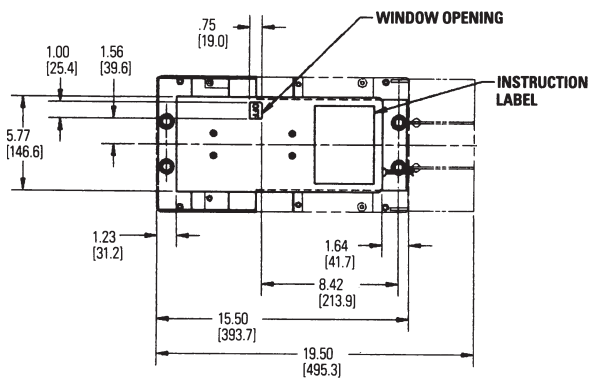


Dimensões

Motorização



Linha SG600



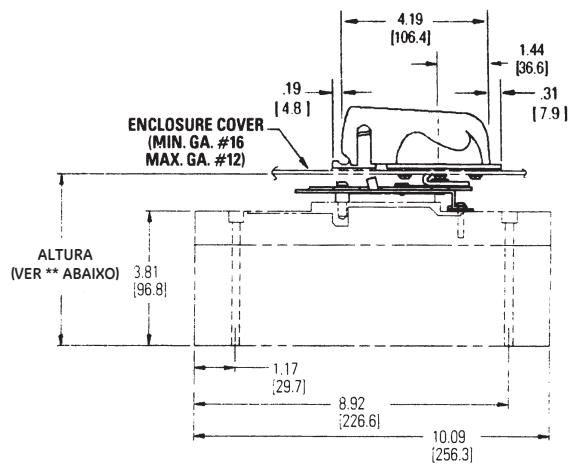
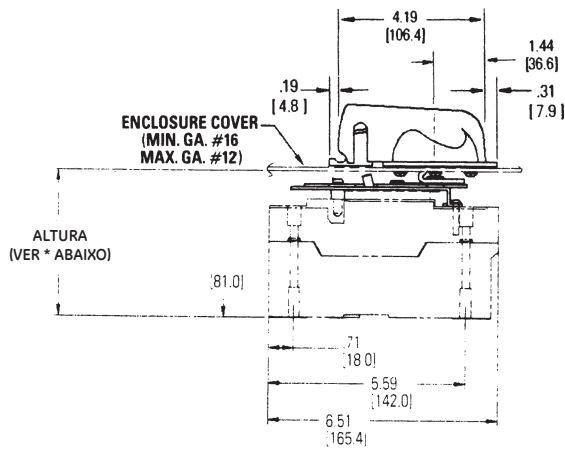
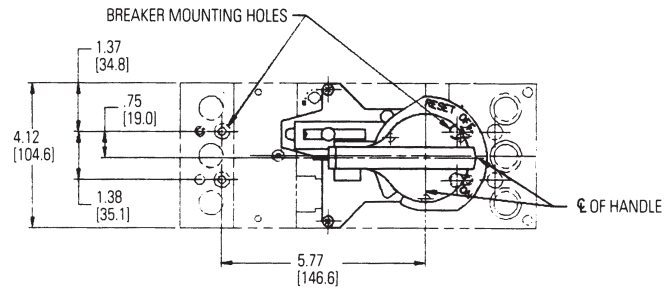
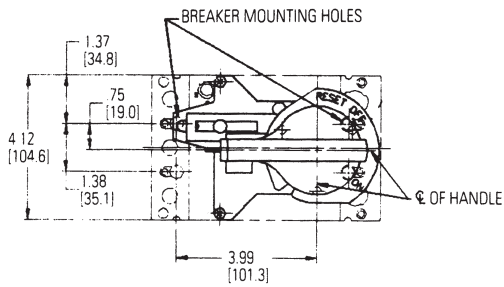
Linha SK1200

Nota: As dimensões entre () estão em mm.



Dimensões

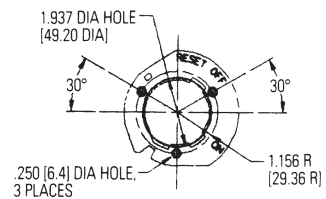
Manoplas TDM



Linha SE150

Linha SF250

*SEFHM2	MIN - 130.3 mm MAX - 381.0 mm
*SKHM2	MIN - 149.4 mm MAX - 393.7 mm

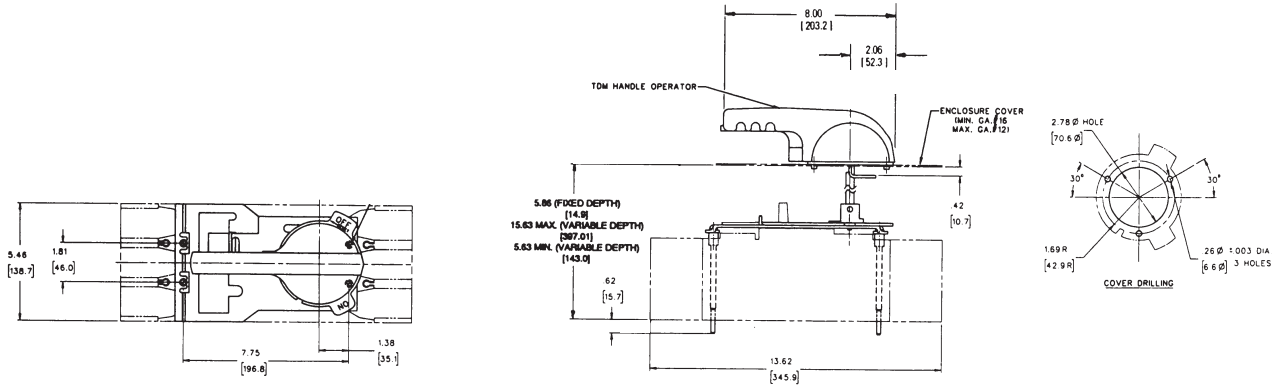


COVER DRILLING
COMMON TO SE-150 & SF-250 LINE

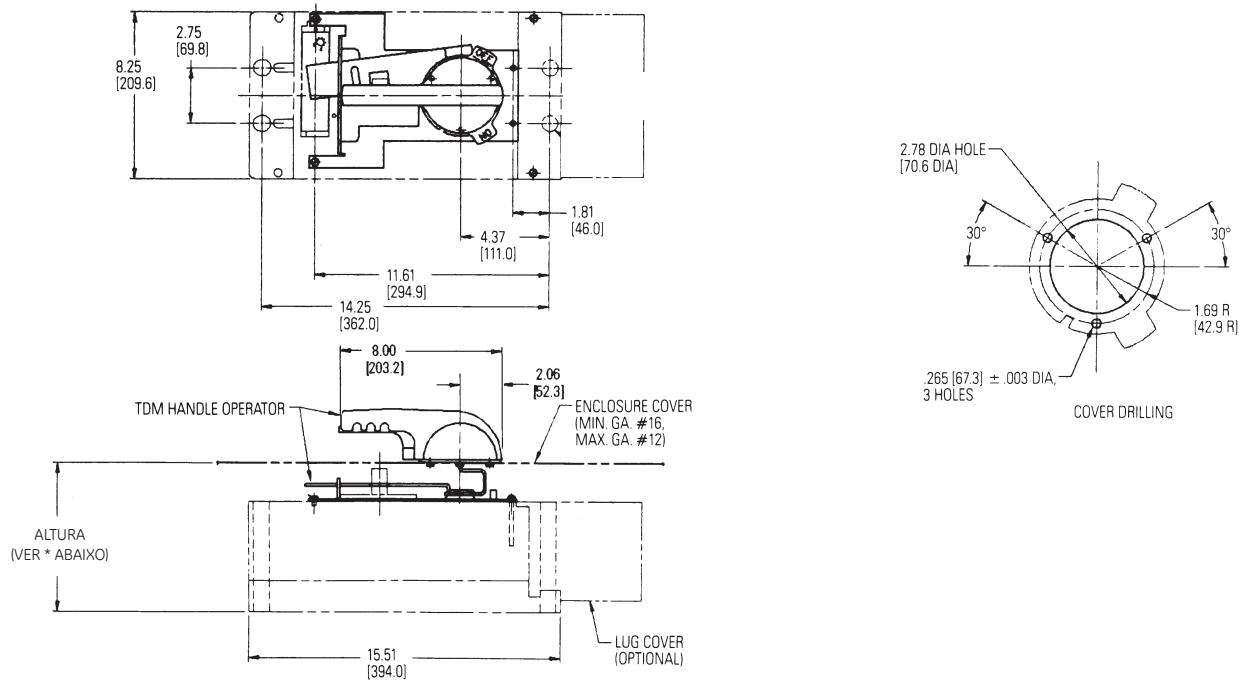
Nota: As dimensões entre () estão em mm.

Dimensões

Manoplas TDM



Linha SG600



Linha SK1200

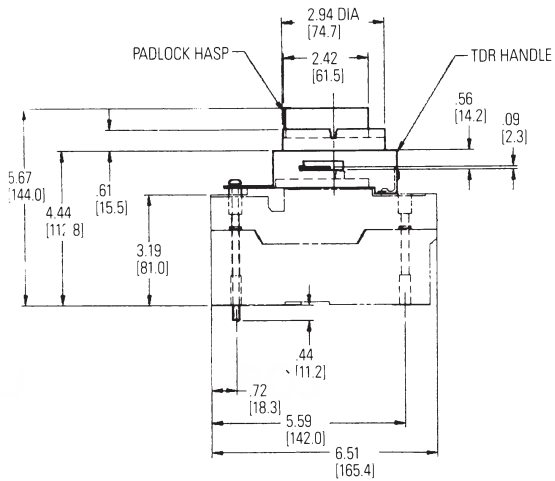
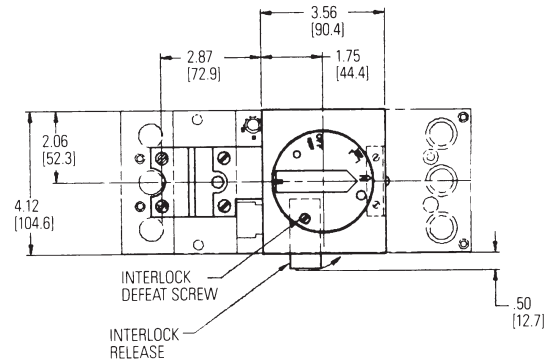
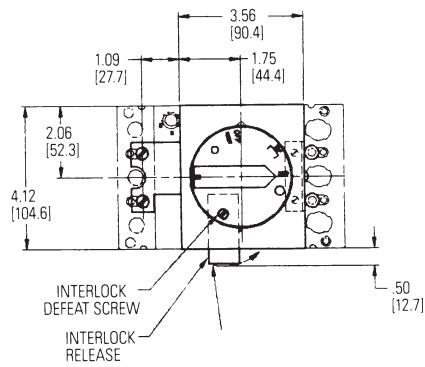
*SKHM2	MIN - 182.6 mm
	MAX - 436.6 mm

Nota: As dimensões entre () estão em mm.

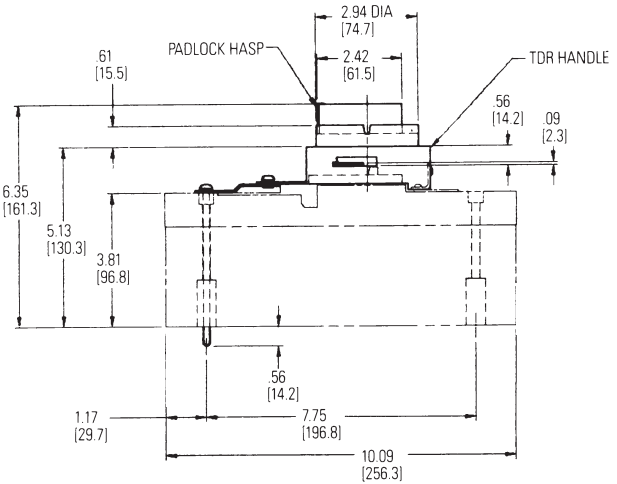


Dimensões

Manoplas TDR



Linha SE150

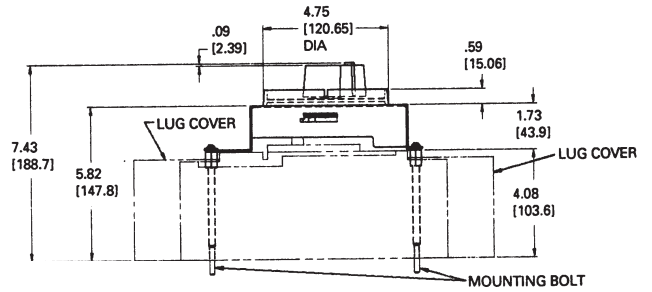
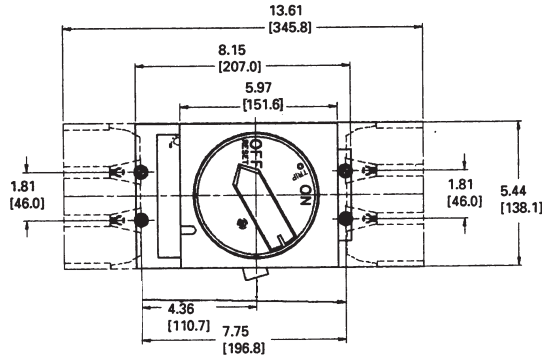


Linha SF250

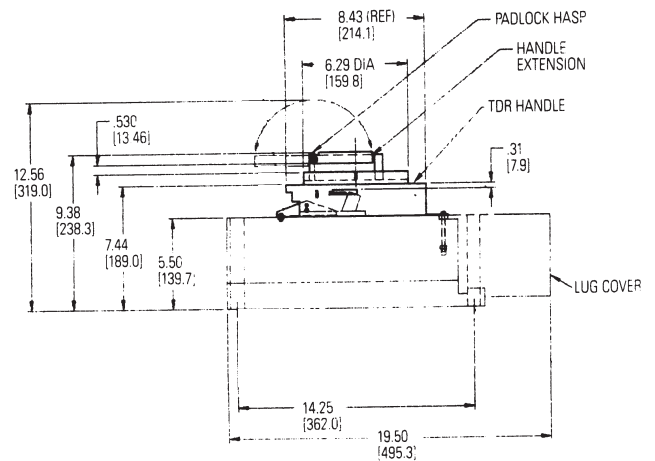
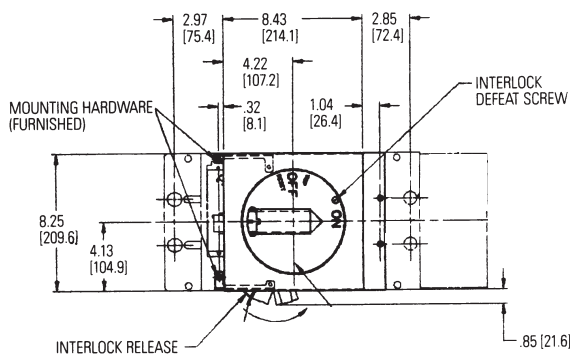
Nota: As dimensões entre () estão em mm.

Dimensões

Manoplas TDR



Linha SG600



Linha SK1200

Nota: As dimensões entre () estão em mm.



Ajuste da Unidade de Disparo

Frame	Corrente Máxima por Frame	Corrente Nominal (A)	Configurações de disparo instantâneo (RMS, A)						
			Posição de ajuste do nível de disparo						
			Min.	2	3	4	5	6	Max.
SE	150	15	43	55	69	86	111	143	182
		20	58	74	93	116	151	196	254
		25	73	93	117	147	193	253	332
		30	87	112	142	179	237	314	415
		40	118	150	188	237	308	394	501
		50	148	187	236	296	386	498	637
		60	178	224	284	355	464	604	777
		70	206	261	329	411	534	684	863
		80	236	299	377	472	614	787	999
		90	267	338	426	532	694	892	1138
		100	297	376	475	593	775	998	1280
		110	328	415	524	654	857	1,105	1426
125	374	474	598	745	979	1,265	1640		
150	450	570	720	897	1,181	1,528	1991		
SF	250	70	205	260	330	410	535	-	700
		90	265	335	425	530	690	-	900
		100	295	375	470	590	765	-	1,000
		110	325	410	520	650	845	-	1,100
		125	370	465	570	740	960	-	1,250
		150	440	560	705	885	1,150	-	1,500
		175	515	655	825	1,035	1,345	-	1,750
		200	590	750	940	1,180	1,535	-	2,000
		225	665	840	1,050	1,330	1,730	-	2,250
250	740	935	1,180	1,480	1,920	-	2,500		
SG	400	125	380	480	620	765	990	-	1,275
		150	455	575	740	920	1,185	-	1,530
		175	530	670	865	1,070	1,385	-	1,785
		200	605	765	990	1,225	1,580	-	2,040
		225	680	860	1,115	1,375	1,780	-	2,295
		250	755	955	1,235	1,530	1,975	-	2,550
		300	905	1,145	1,480	1,835	2,370	-	3,060
		350	1,060	1,340	1,730	2,140	2,765	-	3,570
		400	1,210	1,530	1,980	2,445	3,160	-	4,080
	600	250	765	965	1,215	1,500	1,960	-	2,530
		300	915	1,155	1,455	1,800	2,355	-	3,035
		350	1,070	1,350	1,700	2,100	2,745	-	3,545
		400	1,220	1,540	1,940	2,400	3,135	-	4,050
		450	1,375	1,735	2,185	2,695	3,530	-	4,555
		500	1,525	1,925	2,425	2,995	3,920	-	5,060
		600	1,830	2,310	2,910	3,595	4,705	-	6,075
		300	940	1,150	1,445	1,795	2,375	-	3,015
		400	1,255	1,535	1,930	2,395	3,165	-	4,015
SK	800	500	1,570	1,915	2,410	2,990	3,955	-	5,020
		600	1,875	2,290	2,895	3,610	4,740	-	6,195
		700	2,155	2,665	3,375	4,240	5,525	-	7,420
		800	2,440	3,035	3,860	4,875	6,305	-	8,705
		600	1,825	2,310	2,905	3,685	4,730	-	6,110
		700	2,125	2,695	3,390	4,300	5,515	-	7,125
	1,200	800	2,430	3,080	3,870	4,910	6,305	-	8,145
		900	2,735	3,465	4,355	5,525	7,090	-	9,160
		1,000	3,040	3,850	4,840	6,140	8,880	-	10,180
		1,200	3,650	4,620	5,805	7,370	9,455	-	12,215

A GE Energy possui produtos de baixa e média tensão direcionados para controle e distribuição de energia, bem como produtos de supervisão e proteção dos sistemas elétricos, relés de proteção, UPS, chaves de transferência, motores, geradores, serviços industriais e automação industrial, tendo sempre uma solução elétrica para melhor atender sua necessidade nas áreas residenciais, comerciais e industriais.

Visite nosso site:
www.msasystemelectric.com.br

Contato

MSA CONTROL Indústria Elétrica Ltda.
MSA SYSTEM Elétrica Ltda.

Rua Iapó 334 - Casa Verde - São Paulo - SP - CEP:02512.02

Tel/Fax: (11) 3961.1171 - comercial@msacontrol.com.br

www.msasystemelectric.com.br & www.msacontrol.com.br



GE imagination at work